
4. Disassembly and Reassembly

4-1 Cabinet

1. Remove 9 screws located on the side of the cabinet.
2. Pull the Main Assembly backwards to remove.
3. To reassemble, place the receiver on a flat surface and repeat the sequence in reverse order.
4. To check that the Chassis Assembly is installed correctly, attempt to pull it from the front cabinet.

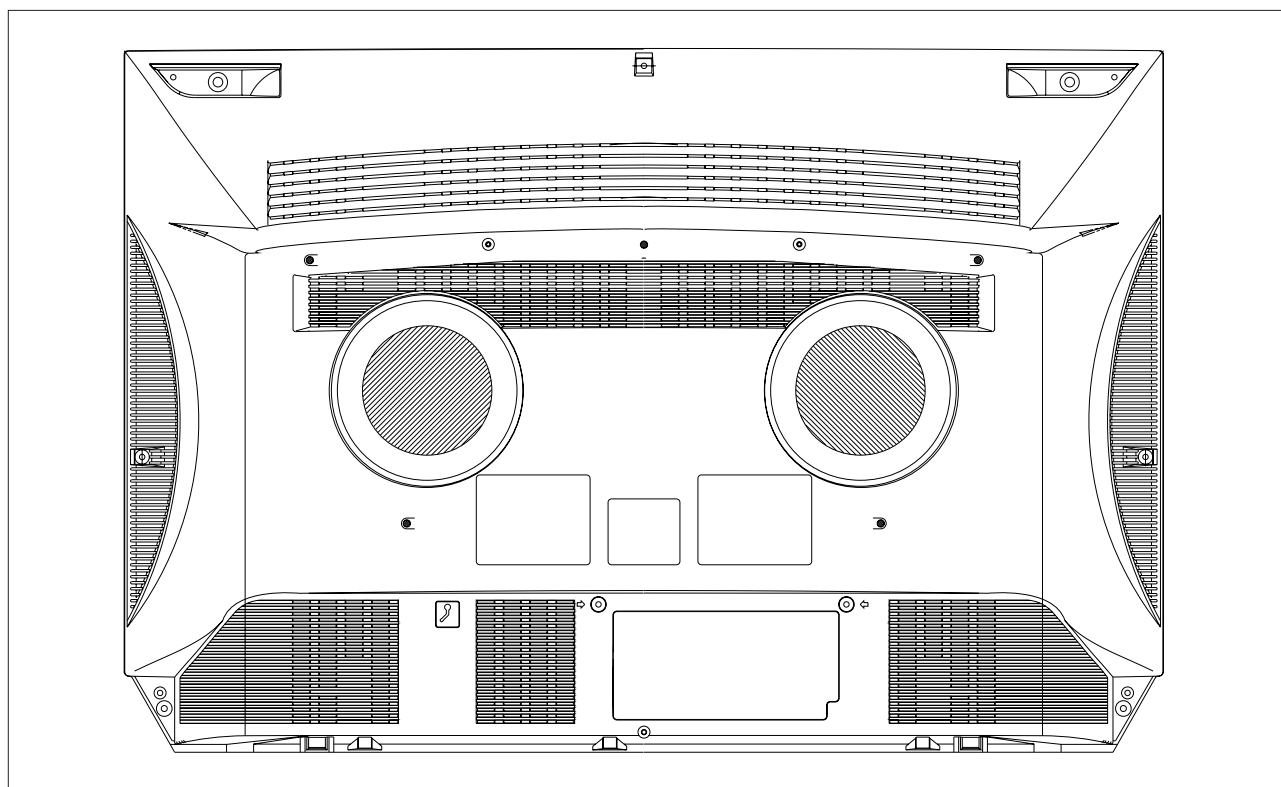


Fig. 4-1

4-2 Speaker

1. Separate Connectors (a), (b).
2. Separate wires from twist-lock.
3. Remove 2 screws, (c).
4. To reassemble, repeat the sequence in reverse order.

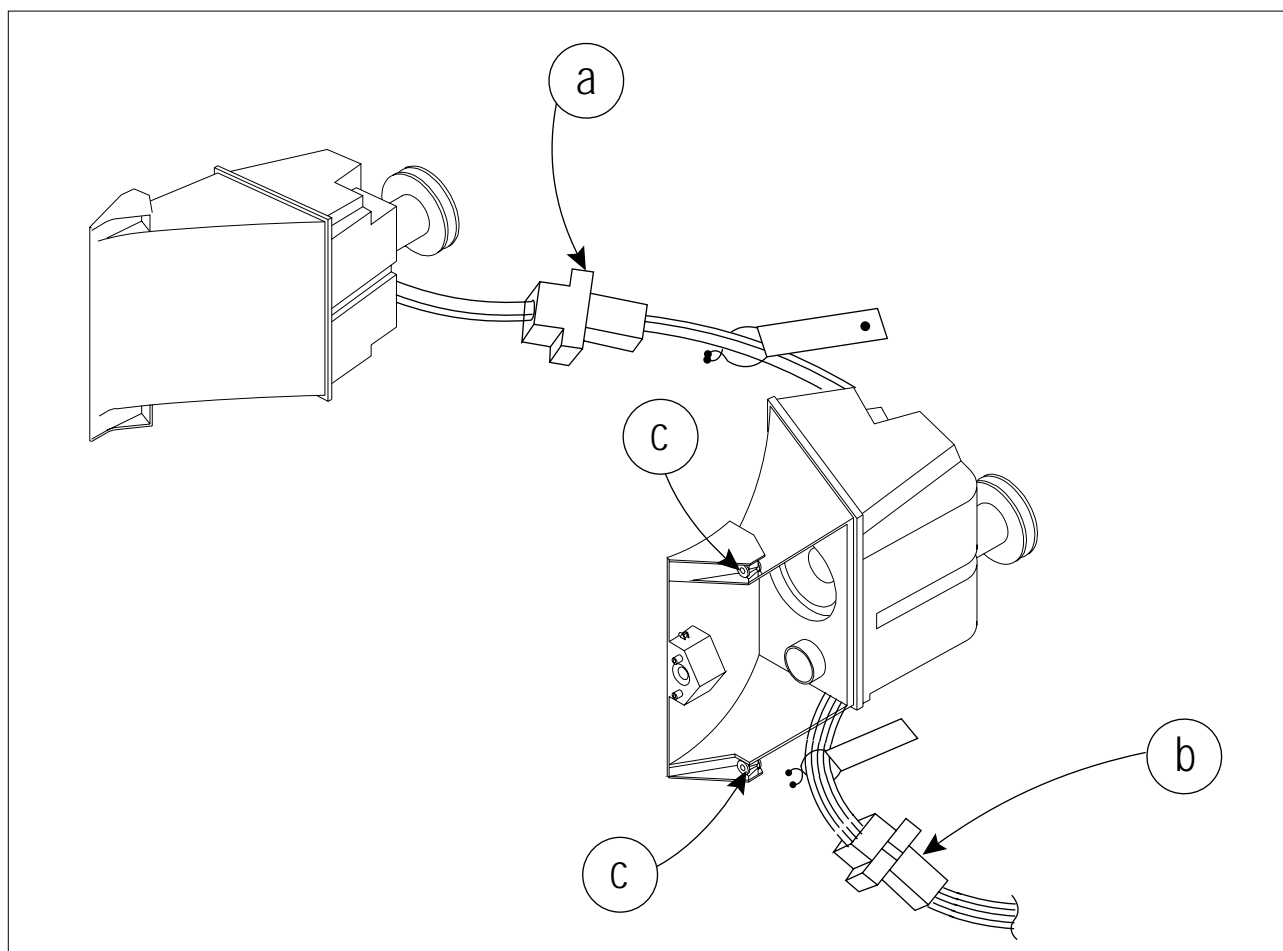


Fig. 4-2

4-3 Chassis Assembly

4-3-1 Removal from Front Cabinet

1. Lift and pull back the chassis mounting.

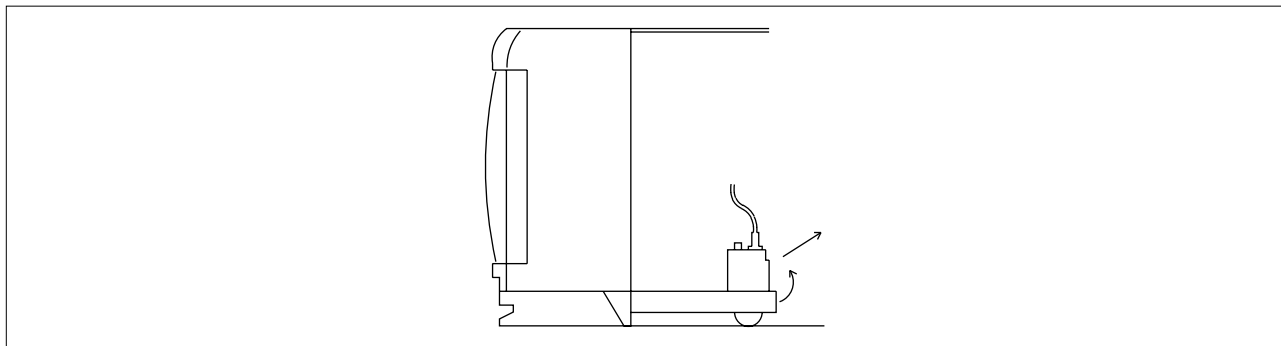


Fig. 4-3

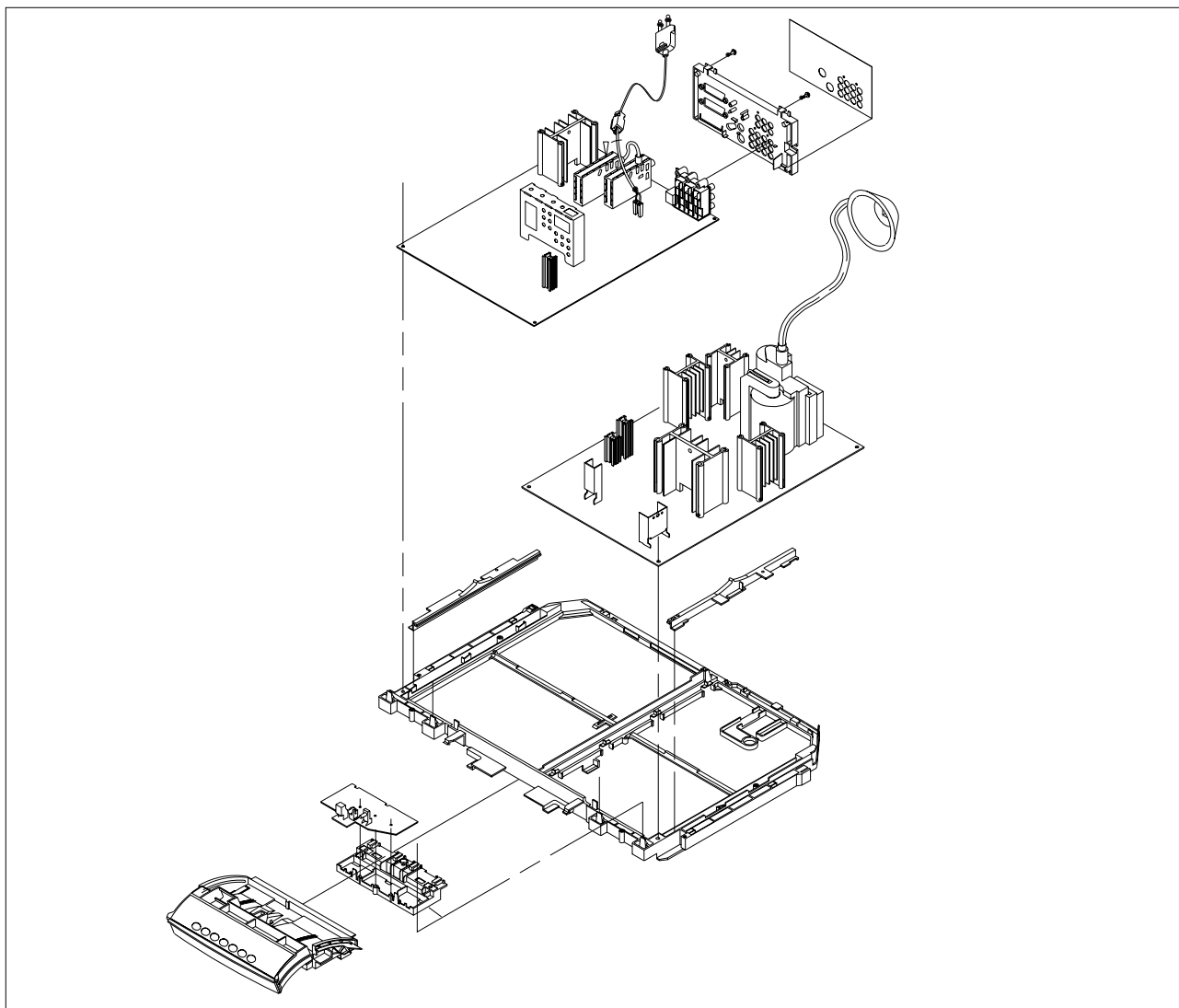


Fig. 4-4

4-3-2 Terminal Board

Removal

1. Pull the power cord to the left and remove it.
2. Remove 1 screw (a).
3. lift up the 2 brackets(b). Separate the terminal board from the chassis mount.
4. To reassemble, refer to Fig. 4-6.

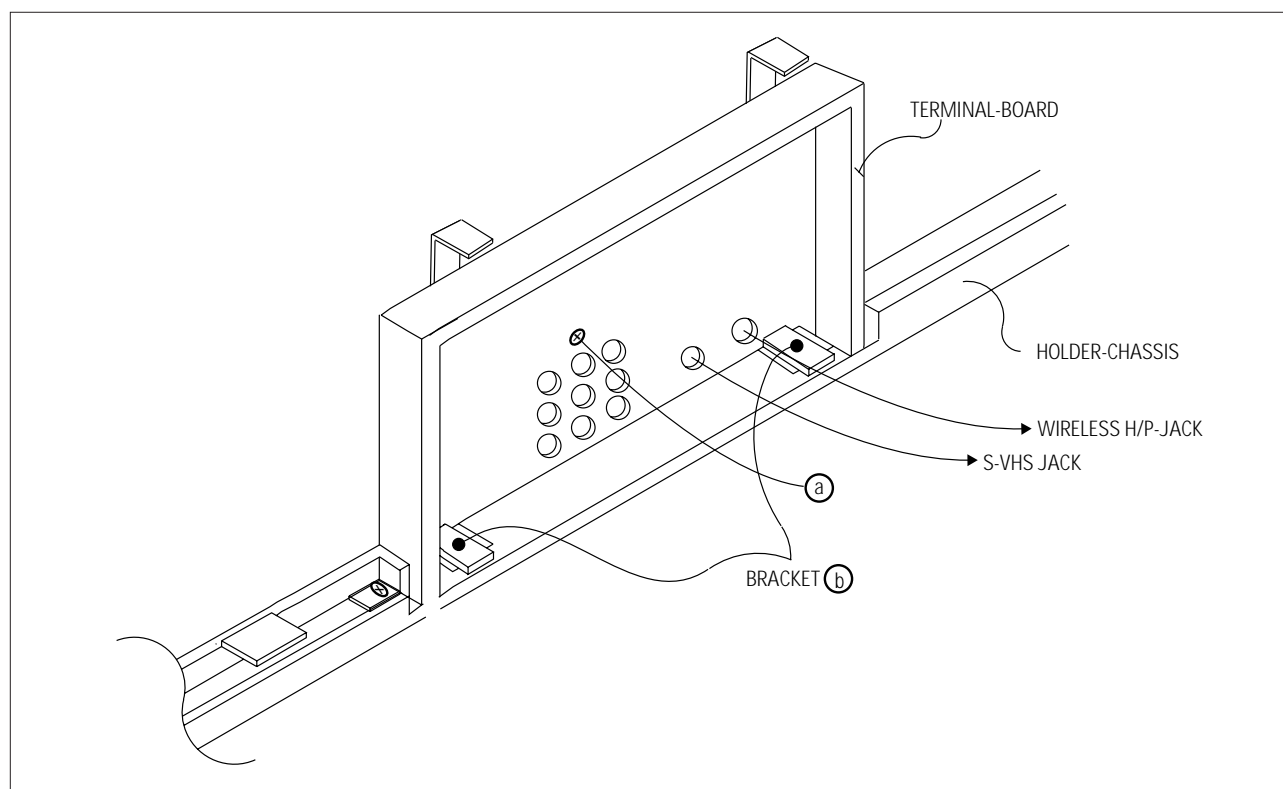


Fig. 4-5

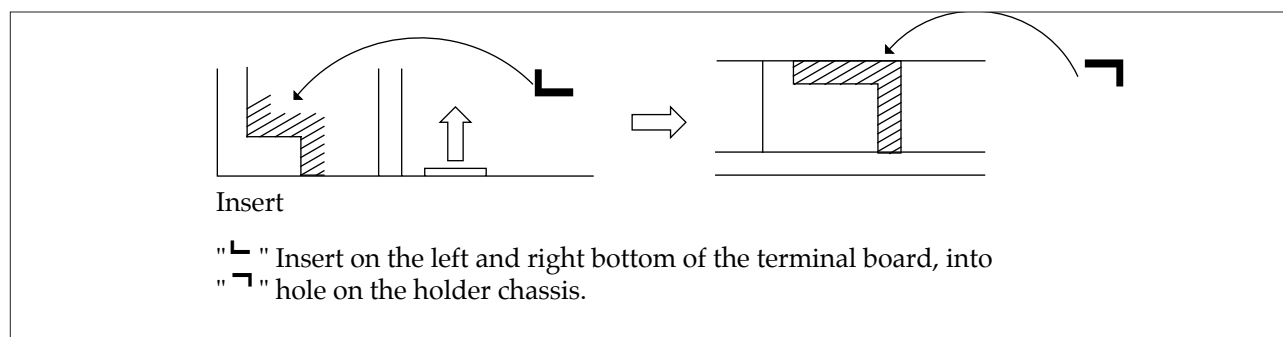


Fig. 4-6

4-3-3 PCB

Removal

1. Refer to the Fig. 4-4.
2. Remove the wire (1P) from the chassis mounting.
3. Pull the PCB guides backwards.
4. Lift both edges of the PCB and pull out.

Disassembly

1. Ensure that the PCB is well positioned in the PCB guides.
2. The power cord must not touch the heat-sink, D73.
3. The PCB guide is part of the chassis mounting ; if a new PCB guide is needed, the complete chassis mounting must be replaced.

4-3-4 SNAPIN Removal

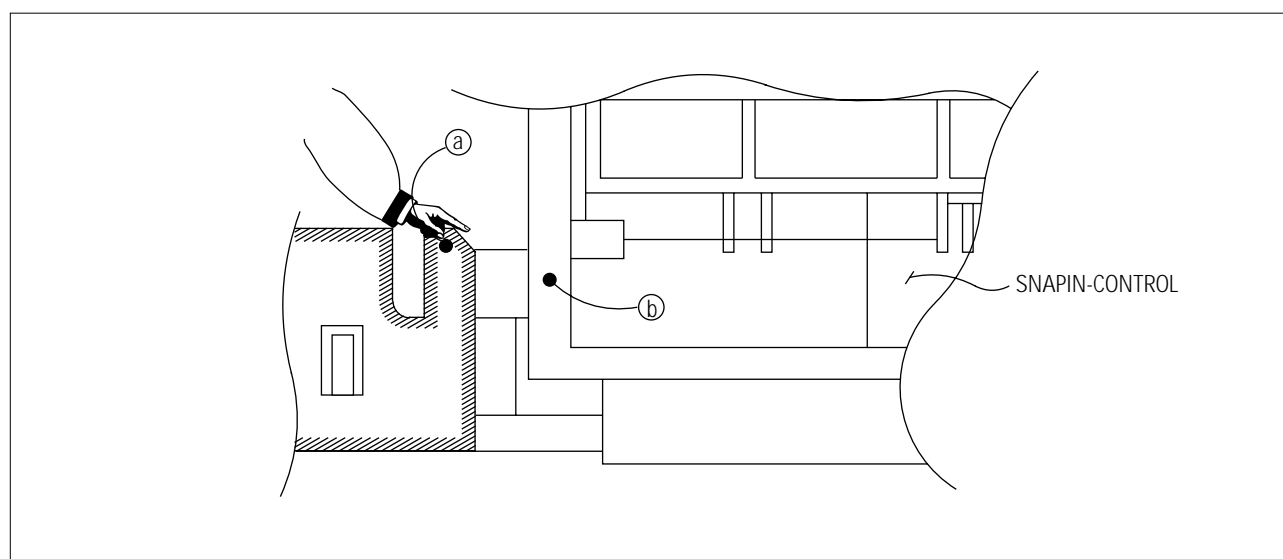


Fig. 4-7 Press the SNAPIN (b) with thumb ; pull the left holder-bracket (a) with index finger

4-3-5 Chassis Reassembly

1. Close the SNAPIN door.
2. Place the chassis bracket (b) onto (a) on the bottom of the cabinet.
3. Push the bracket into the hole (a) until a “click” is heard.
4. Check that the SNAPIN door opens and closes.

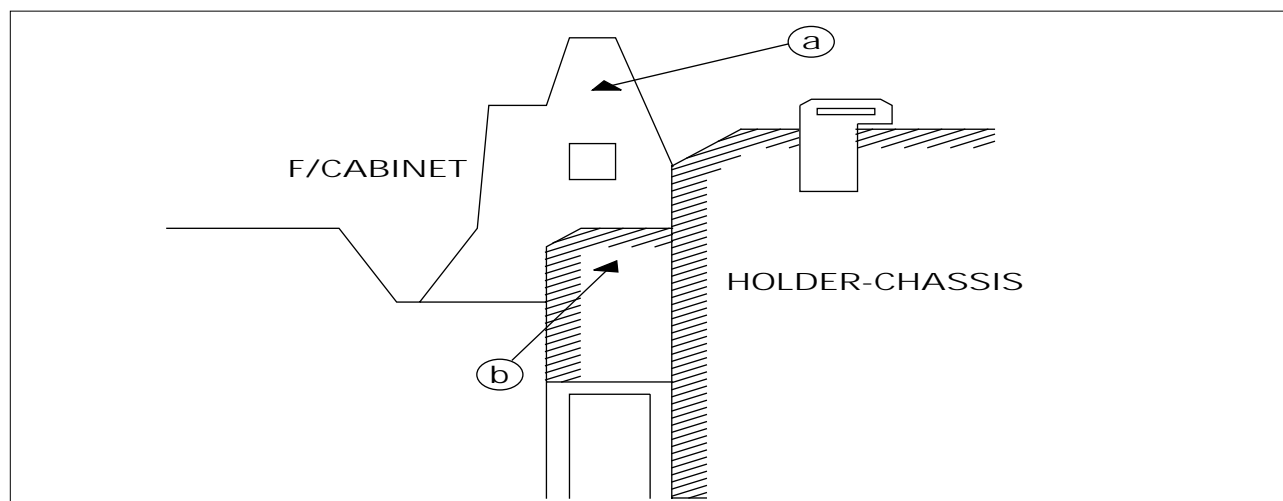


Fig. 4-8